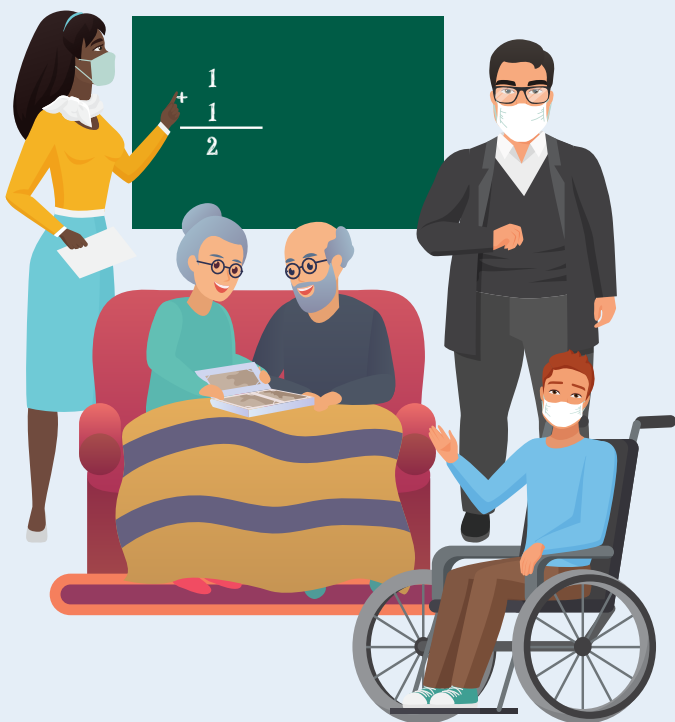


COVID-19 VACCINE Priority Groups for Phase 1

- + **Frontline Healthcare Workers**
(working in an emergency department, ICU, COVID unit, or general acute care)
- + **Long-Term Care Facility Healthcare Workers**



- + **Other healthcare workers, including laboratory and clinic staff**
- + **Public Health Workers**
- + **Emergency Medical Services**
- + **Law Enforcement**
- + **Correctional Officers**



- + **Fire Service Personnel**
- + **Other Critical Infrastructure Workers, including water and wastewater, energy, finance, food service, food and agriculture, legal, manufacturing, shelter and housing, transportation and logistics, information technology and communications**

[Click for More Information on Critical Infrastructure Sectors](#)

A



B

- + **Long-Term Care Residents**
(nursing home and assisted living)

C



D

- + **Persons with 2 or More Underlying Medical Conditions** *(cancer; chronic kidney disease; COPD); Heart Conditions, such as heart failure, coronary artery disease, or cardiomyopathies; Immunocompromised State* *(weakened immune system) from solid organ transplant; Obesity or Severe Obesity; Sickle Cell Disease; Type 2 Diabetes Mellitus*
- + **Teachers and Other School/College Staff**
- + **Persons Aged 65 Years and Older**
- + **Residents in Congregate Settings, Residents in Licensed Independent Living Facilities, and Residents of Licensed Group Homes**
- + **Funeral Service Workers**

E



Due to limited allocation of the vaccine, the South Dakota Department of Health will use COVID-19 infection rates and will follow recommendations from the Advisory Committee on Immunization Practices (ACIP) to guide which counties will receive the vaccine first.

12/14/2020



SOUTH DAKOTA
DEPARTMENT OF HEALTH

covid.sd.gov